



The Leader in Clustered Storage



Applications

Primary clustered storage for a constantly expanding collection of satellite and aerial images used for the world's leading commercial geo-reference information service.

Challenge

GlobeXplorer needed a high performance and scalable storage infrastructure for housing and processing its extensive library of geo-referenced satellite and aerial images. The solution needed to be extremely easy to manage, scalable to hundreds of terabytes in a single file system and capable of constantly adding to and distributing GlobeXplorer's online archive — which is the worlds largest commercially available archive.

Isilon IQ Benefits

GlobeXplorer had an existing and extensive storage infrastructure from a leading traditional NAS company and selected Isilon IQ for its significant advantages and benefits in the following areas:

- Linearly scalable performance and capacity
- Capability to scale without downtime in less than 60 seconds
- Support for more than 250 terabytes in a single file system
- Superior read and write performance
- Support for industry standard file protocols such as NFS, CIFS, HTTP

ISILON IQ CASE STUDY

Isilon IQ Clustered Storage Enables GlobeXplorer to Accelerate Acquisition and Delivery of Maps and Images while Significantly Reducing Costs and Complexity.

GlobeXplorer® LLC, a wholly owned subsidiary of Stewart Information Services Corp. (NYSE: STC), selected Isilon's award-winning Isilon IQ clustered storage systems to collect, store and manage the world's largest and fastest-growing commercial library of maps and aerial and satellite imagery. GlobeXplorer has provided its flexible subscription-based services to leading Internet portals such as Mapquest.com, Maps.com, National Geographic, ADT, real estate companies, and U.S. Government agencies that include the Environmental Protection Agency, the Census Bureau and the Lawrence Livermore National Lab.

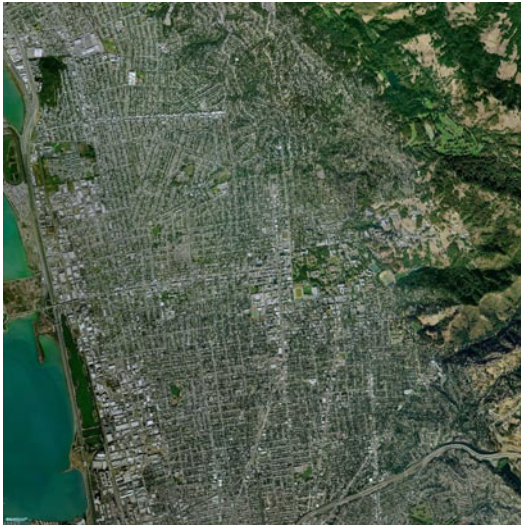
By combining advanced maps from a diverse set of sources with satellite and aerial imagery, GlobeXplorer allows users to replace costly, time-consuming onsite visits and use of paper maps with the simplicity and power of mouse clicks. To support its rapidly growing library and ever increasing image resolutions, the company required a highly scalable storage solution that could be easily integrated into its environment and deliver unparalleled reliability, performance and business value. Isilon IQ clustered storage, powered by the revolutionary OneFS™ distributed file system, enables GlobeXplorer to continually expand its collection, which today totals more than 500 Terabytes of data.

A technology leader and early pioneer of web services, GlobeXplorer provides seamless, rights-managed access to a wide array of digital maps, land records, satellite imagery and aerial fly-overs — images that today are so detailed they can alert a potential homebuyer to missing rooftop shingles.

GlobeXplorer enables its customers and their end-users to quickly view geographic areas and overlay relevant information such as flood plain data, property lines and detailed visual representations. With its syndicated service and plethora of information sources, GlobeXplorer is enabling a more detailed and richer view of geographical data than is possible with traditional resources.

"GlobeXplorer provides its customers with the most detailed, affordable and accurate views of the planet so that our customers have the information they need to make better and faster decisions. Managing reference information is a core component of our business and Isilon's clustered storage solutions allow us to revolutionize the services we provide to our customers while significantly cutting the costs associated with storing our extremely large and rapidly growing data sets."

— Rob Shanks, president of GlobeXplorer LLC.



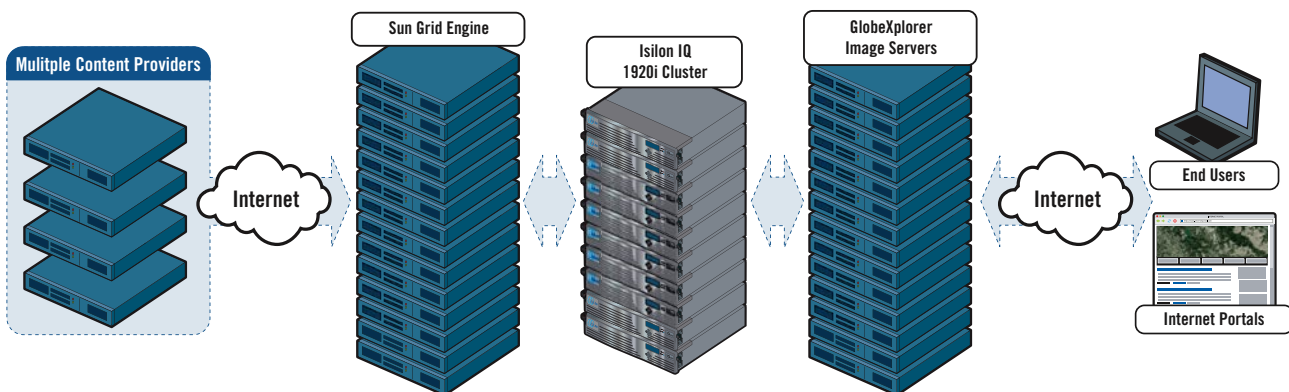
Satellite and aerial images of Berkley, CA USA

“Our commercial library of mapping and satellite images grows at an incredible rate and was causing our traditional storage systems some major problems,” said Rob Shanks. “Isilon IQ clustered storage, with its built-in ease of growing and managing large data stores, provides GlobeExplorer with tremendous business benefits — and helps our IT team concentrate on more highly leveraged matters.”

The sheer size of GlobeExplorer’s collection, combined with the rate of new additions, strained its traditional storage systems and forced administrators to navigate a complicated maze in order to modify or expand capacity and performance. By creating a single, modular and expandable pool of networked storage, Isilon IQ enables organizations to reliably add tens, hundreds, or even thousands of terabytes of storage - dramatically reducing both capital acquisition and ongoing IT management costs. Unlike most traditional storage systems, which require costly custom hardware that is delivered in complex, monolithic architectures, the Isilon IQ family of clustered

storage systems offers unmatched mission-critical performance in a modular form factor that uses intelligent software coupled with industry-standard hardware.

GlobeExplorer is leading a revolutionary shift in how people, companies and governments can view and understand the earth’s geography by providing the most detailed, up-to-date and accurate mapping and satellite imagery available. As globalization and technology continue to unite far-flung areas of the globe, GlobeExplorer’s services are becoming an increasingly vital component of how business, international organizations and governments make informed geographic decisions. Isilon IQ clustered storage provides GlobeExplorer with the high performance, scalability and reliability it needs to drive its growth and deliver unparalleled mapping and satellite imaging services to its customers around the world.



Isilon Systems, Inc.
 220 West Mercer Street
 Seattle, WA 98119

Toll-Free: 877-2-ISILON • Phone: +1-206-315-7602
Fax: 206-315-7501 • Email: sales@isilon.com
www.isilon.com

